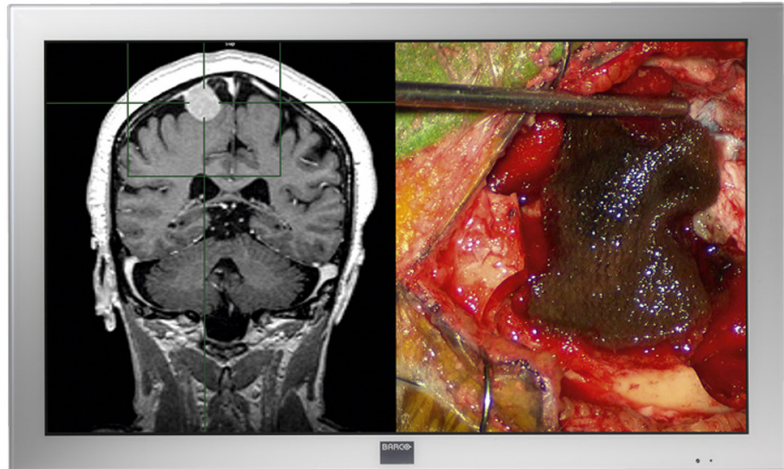


# MD-4221

42-inch High Definition LCD display for the operating room



The Barco MD-4221 is a 42-inch Full High Definition (1920 x 1080) monitor designed and certified for use in the digital operating room. The versatile display can visualize a wide range of analog and digital video sources, including HD endoscopic video, room and boom camera video, patient and surgery information, radiology and pathology images, with ultimate detail.

#### Bringing PACS to the OR

Fitted with a 10-bit high-contrast LCD panel and a built-in DICOM Look-Up Table, the MD-4221 is optimal for consulting PACS images in the OR.

#### User-definable screen layout

The MD-4221 lets you combine two images - in any mix of data and video - next to each other or as Picture-In-Picture. Its wide viewing angle of 178° ensures that all this information is clearly visible for everyone in the surgery suite.

#### Designed for the operating suite

An anti-reflective protective front glass allows the monitor to be cleaned and disinfected (IPX1 compliant), while its fan-less design avoids the spread of contaminants in the operating room.

**BARCO**

Visibly yours

## Technical specifications

Screen technology	TFT LCD
Active screen size (diagonal)	1067 mm (42.0")
Active screen size (H x V)	930 x 523 mm (36.6 x 20.6")
Aspect ratio (H:V)	16:9
Resolution	2MP (1920 x 1080)
Pixel pitch	0.4850 mm
Color imaging	Yes
Color support	> 1 billion
Viewing angle (H, V)	178°
Maximum luminance	500 cd/m²
Contrast ratio	1300:1
Response time (Tr + Tf)	10 ms
Scanning frequency (H; V)	30-93 KHz, 50-85 Hz
Housing color	White
Video input signals	DVI-D Single Link VGA (D15) S-video Composite video Component video RGBHV SDI/HD-SDI input/output
Interfaces/Ports	Component video Composite Video S-video D15 DVI-I RS232 No audio RS232, IR remote control
Power requirements (nominal)	100-250V
Power consumption (nominal)	260W
Power save mode	Yes
Power management	DVI-DMPM states supported Power On state Active-Off state
Dot clock	162 MHz
OSD languages	English
Dimensions w/o stand (W x H x D)	1024 x 617 x 111 mm
Dimensions packaged (W x H x D)	1185 x 790 x 355 mm
Net weight w/o stand	30.4 kg
Net weight packaged w/o stand	35.0 kg
Mounting standard	VESA (MIS F; 600; 200 - 8)

<b>Screen protection</b>	Protective, non-reflective glass cover
<b>Recommended modalities</b>	CT, MR, US, DR, CR, NM, Film
<b>Certifications</b>	UL 60601-1, CAN/CSA-C22.2 No 601.1-M90: 2005, EN 60601-1, IEC 60601-1, CE, EN 60601-1-2, FCC-B, VCCI, RoHS compliant, KCC, IPX1
<b>Supplied accessories</b>	User manual Video cables (DVI-D, VGA) Main cables (European (CEBEC/KEMA), USA (UL/CSA)) Remote control
<b>Optional accessories</b>	Barco MDSC Surgical Medical LCD Display Extension Cable 10m Barco MDSC Surgical Medical LCD Display Extension Cable 2.5m Barco MD-4421 Surgical Medical LCD Display Wall Bracket
<b>Warranty</b>	3 years